



3000 SERIES

Daylight Saving Time Instructions

2000/3000 SERIES WITH FAST TRACK PC SOFTWARE INSTALLED ON LOCAL PC

- The U.S. Congress issued changes for Daylight Saving Time to take effect in March, 2007. In 2006, Daylight Saving Time began on the first Sunday of April and ended on the last Sunday of October. **As of 2007, Daylight Saving Time starts on the second Sunday of March and ends on the first Sunday of November, with all time changes taking place at 2:00 AM local time.**
- Fast Track 2+2 Timer Firmware released prior to 6/22/07 was designed to change Daylight Saving Time automatically on the old dates.
- If your timer has Firmware Version 1.98I or higher, this version has the NEW Daylight Saving Time update. If your timer has any version prior to this, or if SW17-Switch 7 has been turned off, the time will need to be manually adjusted and you will need to follow the instructions below. ***Please see instructions below on how to verify the timer firmware version.**
- Any version prior to 1.98I requires the automatic Daylight Saving Time function to be disabled per the attached SW17-Switch 7 instructions. From this point on, the time will need to be manually adjusted per the attached Time Change instructions.
- Current versions of firmware released by Fast Track 2+2 have the updated Daylight Saving Time dates and the automatic function enabled.

NOTE:

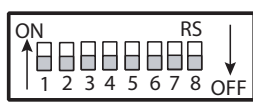
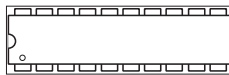
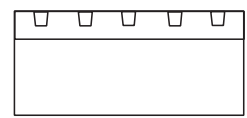
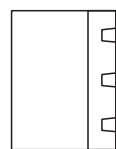
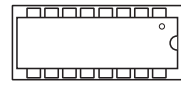
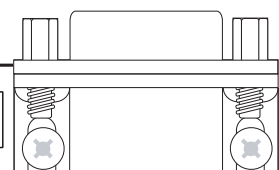
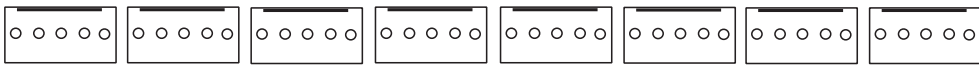
TIMER FIRMWARE VERSION INFORMATION:

Firmware Version 1.98I has the new Daylight Saving Time update and requires no manual adjustment if the unit was shipped on or after 6/22/07.

3000 Series Timers began shipping with Firmware Version 1.98I on 6/22/07
Starting Serial# - 35590

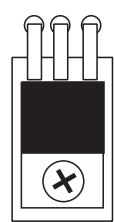
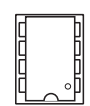
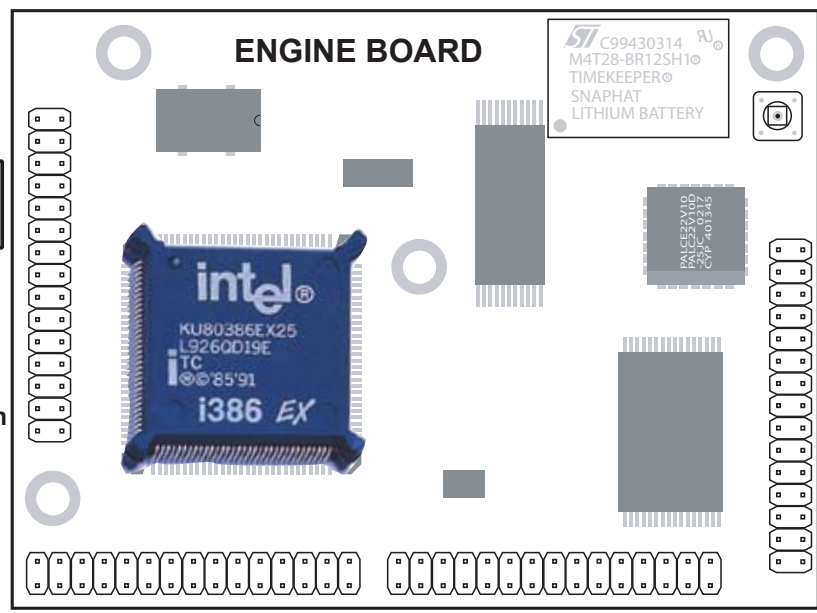
***TO VERIFY TIMER FIRMWARE VERSION:**

3000 Series: Connect to the timer via Fast Track PC Software or Remote Control Shortcut. The Firmware Version is displayed under the Serial# during the connection process. OR - Open Remote Control while connected to the timer, click "Main Menu" and the Firmware Version is located under the Serial#.



ZIMS

Turn OFF Switch 7 on Switch Block SW17 located to left of Engine Board with Intel processor chip. This will disable automatic Daylight Savings Time change.

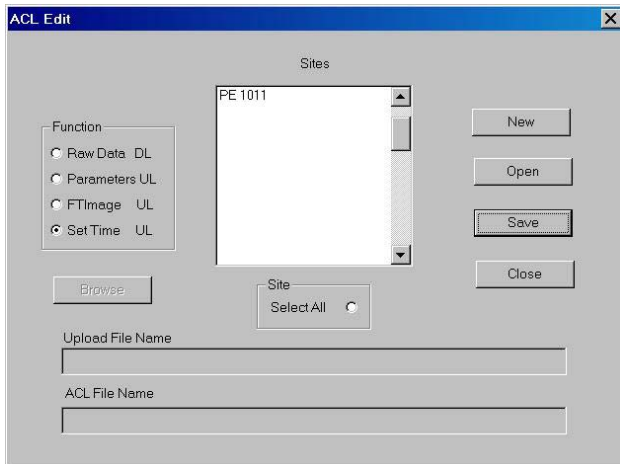


Fast Track 2+2 2000/3000 Series Main Board

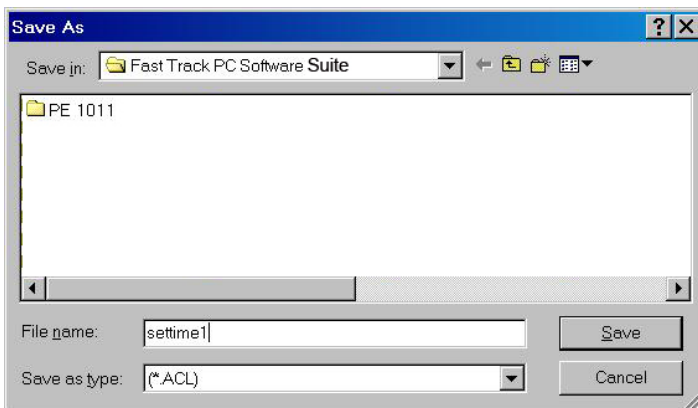
Fast Track[®] 2+2

Creating an ACL/Batch File to Automatically Synchronize Time in 2000/3000 Series Timers.
IMPORTANT: *These instructions apply to creating and running the batch file from the local PC.*

1. Open Fast Track PC Software Program
2. Click on ACL to open the ACL Edit dialog box



3. Select "Set Time UL" under the FUNCTION menu.
4. Click the site (example PE 1011) listed under the Sites list.
5. Click "Save".



6. Choose a file name to save as such as "settime1" and click "Save".
7. Use a third party program such as Microsoft Windows Scheduler to run the batch file. This should be done daily to synchronize the time on the Timer with the PC to which it is connected.

3-17 ACL

The Automatic Command Line (ACL) feature allows for downloading and uploading to one or more timers through the Software by creating a batch file that can be used with third party programs such as MS Windows Scheduler.

Important: *You must configure each site individually under Site Configuration using the Report Options (See - section: [3-4.5 Site](#)) to use with Raw Data DL.*

New Create a new ACL batch file

Open Opens a saved ACL batch file

Save Saves a new or edited ACL batch file

Close Closes this function

Raw Data DL Downloads data from timer to create reports

Parameters UL Uploads unit parameters to timer from a saved unit parameters file (.spd). Use browse to select the file.

FTImage UL Uploads a new image to timer. Update the firmware to the latest version released from Phase Research.

Set Time UL Sets the time on the timer from the PC's time. This will keep the timer and PC's time in sync.

Select All Selects all of the timers in the sites window. Clicking on a particular site will select or deselect the site.

To create an ACL batch file select a function, Raw Data DL, Parameters UL, FTImage UL, or Set Time UL select the site or sites to use the function with then save the file using the name you choose.

You should now be able to use the batch file with any third party program you wish.

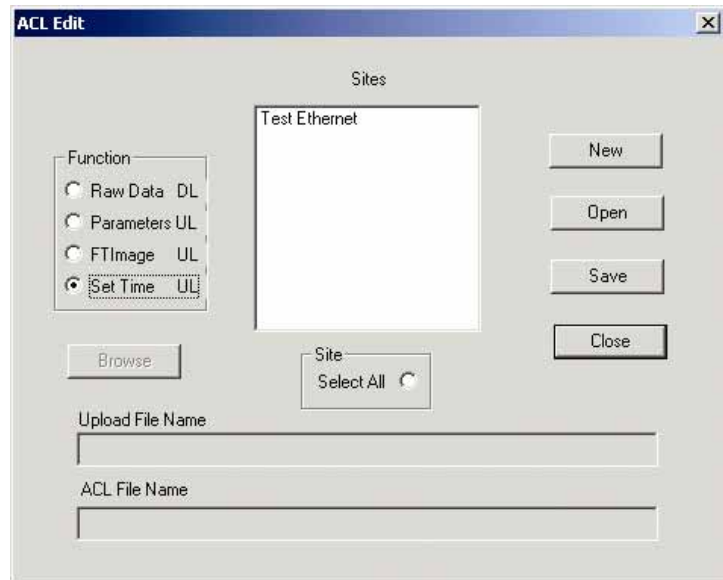


Figure 50 – ACL